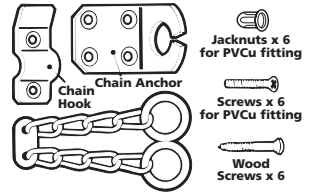


# DOOR CHAIN

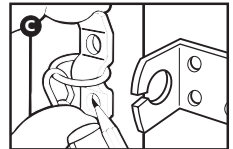
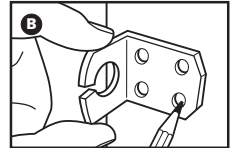
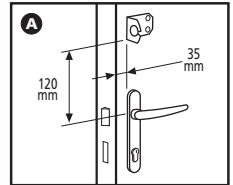
## ref 791

To fit the Door Chain the following tools are required - a pencil, tape measure, a power drill, 2.5mm & 9.5mm dia drill bit, a posidriv screwdriver



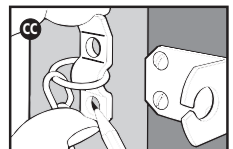
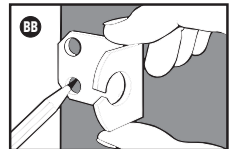
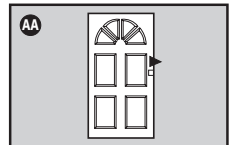
### Fitting Instructions for PVCu

- A** Select position for door chain, see dia A. The position of the anchor shown is to avoid the risk of drilling through the lock mechanism.
- B** Mark with pencil the 4 hole positions of the door anchor, see dia B.
- C** Drill 4 pilot holes with 2.5mm dia drill at 30mm deep. You might encounter steel reinforcement in the door; simply drill through the reinforcement. Drill same 4 holes to 9.5mm dia at 30mm deep.
- D** Insert jack nuts into the holes, tighten each screw down to pull the jack nuts into position. The nuts work by the 4 legs bending as you screw them tightly forming a metal claw behind the plastic of the door. **NB** In the event that the jack nut spins, grip the head of the jack nut with pliers and proceed to tighten. For security it is essential that all 4 jack nuts are drawn down tightly and fully.
- E** Remove screws and position the door anchor over the jack nuts, re-insert screws and tighten.
- F** Close the door and align the chain hook opposite the anchor plate. Mark the position of the screw (2) holes and follow the same procedure as detailed in D & E. Remember to slip one end of the door chain into position. See diagram C.



### Fitting Instructions for Timber Doors

- AA** Select position for door chain, see dia AA.
  - BB** Ensuring the chain anchor is flush with edge of door, mark screw holes. Screw into position, see dia BB.
- Note: If fitting to hardwood drill 2.5mm pilot holes.
- CC** Position chain hook on door frame level with chain anchor and hook uppermost. Mark screw holes. Fit chain, and screw into position, see dia CC.



**Operation** - Slide flat plate into slot in chain anchor. When chain not in use place end ring on chain hook.

**Security Tips** - Always engage chain and ask for identification before opening the door to strangers.

For additional safety we recommend the use of an ERA 120° Door Viewer (Ref: 786) or ERA 160° Door Viewer (Ref: 784).

**Maintenance** - Use a moist cloth only, household abrasives or solvents may affect the surface finish – lubrication may occasionally be required.